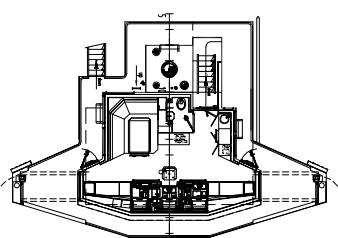
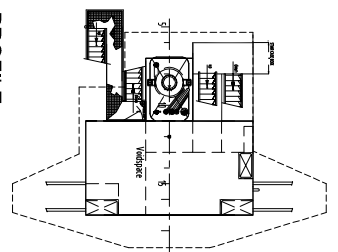
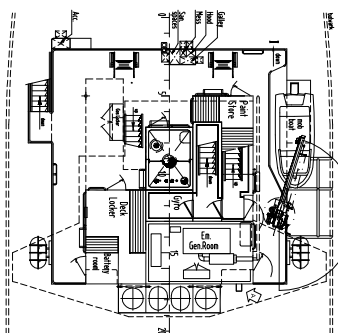


BOATDECK

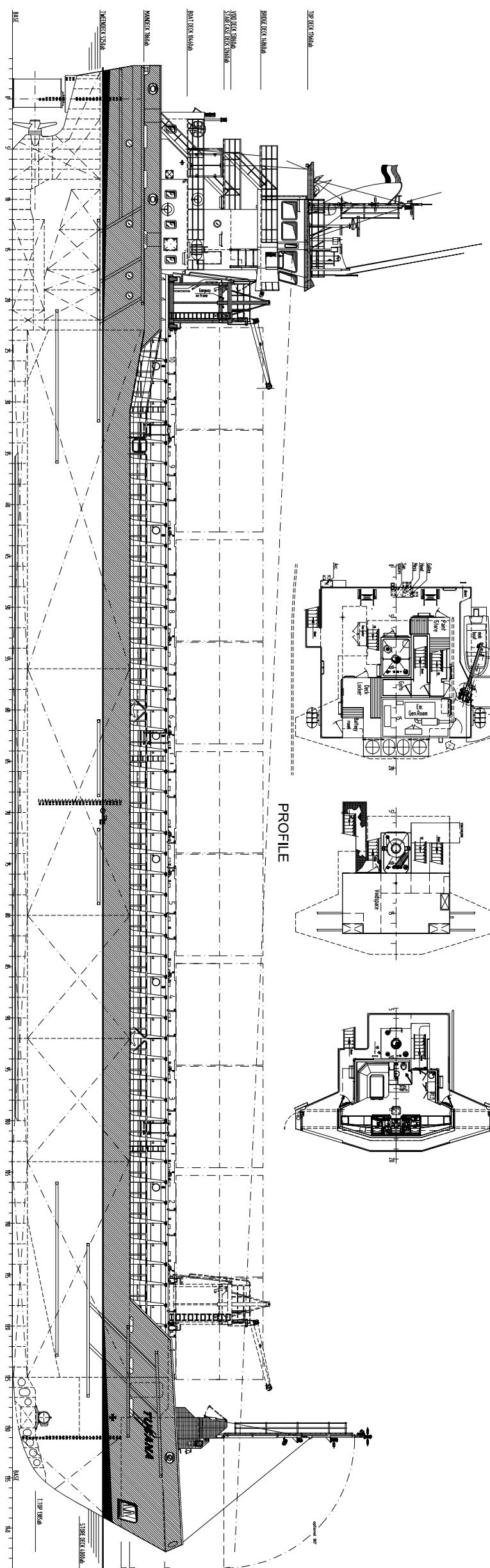
VOIDDECK

BRIDGEDECK

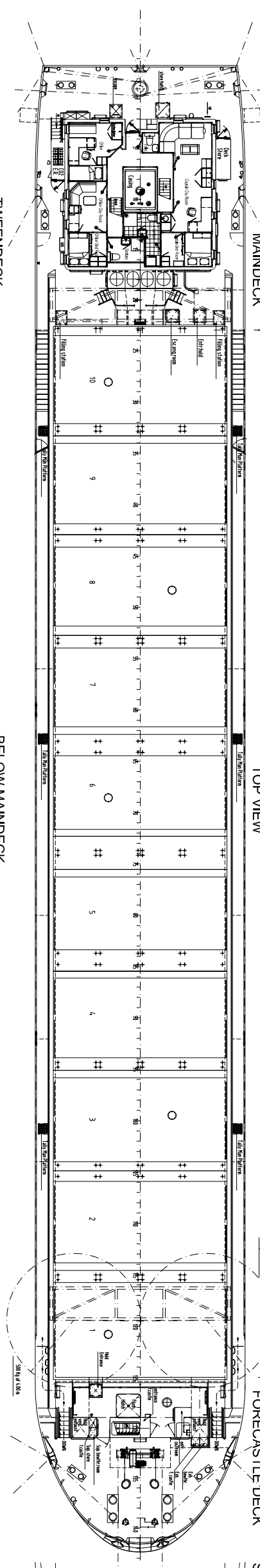
arrangement subject to Class & Stat. approval



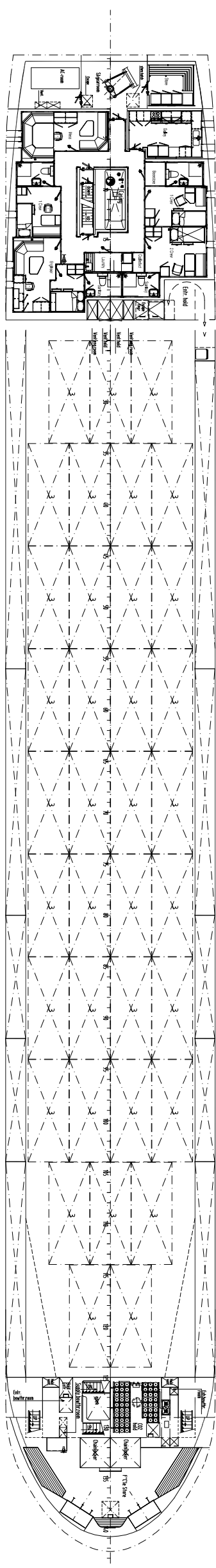
PROFILE



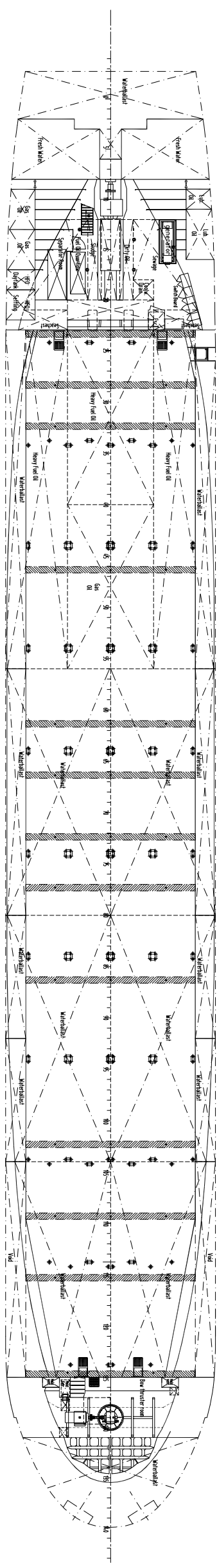
TOP VIEW



BELOW MAINDECK

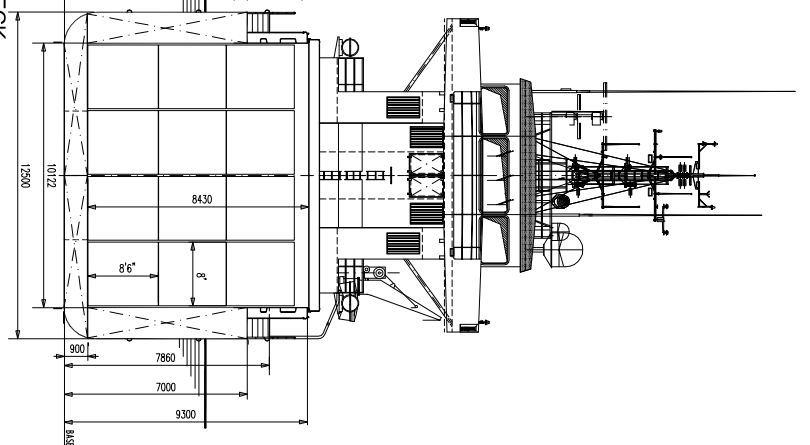


TANKTOP, 900 a.b.



ENGINE ROOM

CROSS SECTION



PRINCIPAL DIMENSIONS CR-3850

Length o.a.	88.4	m
Length p.p.	84.99	m
Length b.p.	73.50	m
Breadth	7.00	m
Depth to maindeck	3.10	m
Depth to keel	7.21	m
Depth to bottom	8.80	m
Displacement at 5.42 m approx.	3800	ton
Hull capacity approx.	5250	a³
Tank capacity:		
Ballast approx.	314	a³
Oil approx.	58	a³
Gas approx.	5	a³
Perishable water	55	a³
Lubrication oil	8.6	a³
Lubrication temp. oil	7.1	a³
Dry air	5	a³
Sludge	6	a³
Condenser drain	2.6	a³
Coal/lower capacity:		
In hold	108	TDU
On hold	80	TDU
Total	188	TDU
Tonnage about:		
2545 GRT		
LES, 400A, 4-K, 0K5		
NS, 0-axis wheelsteering		

GENERAL ARRANGEMENT

COMBI FREIGHTER 3850

TYPE	CR-3850
COMP. NO.	1000000
SECT. NO.	000000
CONTRACT NO.	9372-0000
DATE	2008/05/25
SCALE	1:100
DESIGNER	AMBA
CHECKED	AMBA
APPROVED	AMBA

CHANGES: SEE CAPTAIN'S ROOM, ISLANDERS TO 23

REVISED ISLAND PNC 29/04/08 CAPTAIN'S ROOM

REVISION: DRAWN / CHECKED APPROVED / REVISION SUBJECT

PAMLEN DAMEN SHIPYARDS BERGUM

Headquarters: Dam 100, 3618 PA, The Netherlands
 Tel: +31 (0) 20 485 2100 Fax: +31 (0) 20 485 2101
 E-mail: info@damen.com www.damen.com

Copyright © 2008 PAMLEN DAMEN SHIPYARDS BERGUM